

Sales 2012



Edward Horne
HK Commercial Realty
Advisors

190 Van Winkle St, East Rutherford, NJ
44,465± sq ft sold to Dumbo Moving & Storage



Martin Kreiman
HK Commercial Realty
Advisors

190 Van Winkle St, East Rutherford, NJ
44,465± sq ft sold to Dumbo Moving & Storage

For information please call:

1 201 -587-9797
x 312 for Lloyd Tulp, or ltulp@tulfra.com
x 303 for Sal Frassetto, or sfrassetto@tulfra.com

Leases 2012



Jason Crimmins
The Blau & Berg
Company

21 Fadem Road, Springfield, NJ

A 6,492± sq ft industrial unit (unit 1) leased to Artisan digital, iNc.



Alex Conte
The Blau & Berg
Company

21 Fadem Road, Springfield, NJ

A 6,492± sq ft industrial unit (unit 1) leased to Artisan digital, iNc.



Peter Murano
The Blau & Berg
Company

21 Fadem Road, Springfield, NJ

A 6,492± sq ft industrial unit (unit 1) leased to Artisan digital, iNc.

For information please call:

1 201 -587-9797

x 312 for Lloyd Tulp, or ltulp@tulfra.com

x 303 for Sal Frassetto, or sfrassetto@tulfra.com

Leases 2012



Frank Wolfer
Wolfer Commercial

15-01 Pollitt Drive, Fair Lawn, NJ
A 12,000± sq ft industrial unit (unit 3) leased to Vivaro



Robert Nathin
Sheldon Gross Realty

21-25 Riverside Drive, Montville, NJ
A 14,049± sq ft industrial unit leased to Elusys Therapeutics



Barbara Gross
Sheldon Gross Realty

21-25 Riverside Drive, Montville, NJ
A 14,049± sq ft industrial unit leased to Elusys Therapeutics



Shirley Smith
PointLine, Inc.

208 Passaic Ave, Fairfield, NJ
A 69,850± sq ft industrial unit leased to PSS World Medical, Inc

For information please call:

1 201 -587-9797
x 312 for Lloyd Tulp, or ltulp@tulfra.com
x 303 for Sal Frassetto, or sfrassetto@tulfra.com

Leases 2012



Barry Cohorsky
NAI James E. Hanson

755 Central Ave, New Providence, NJ
A 37,000± sq ft industrial unit leased to Wrist America



Russell Verducci
NAI James E. Hanson

755 Central Ave, New Providence, NJ
A 37,000± sq ft industrial unit leased to Wrist America



Rick Sidlovsky
Garden State Realty

2 Frassetto Way, Lincoln Park, NJ
A 9,443± sq ft industrial unit leased to IMC. Inc.



Mark Edie
Coldwell Banker
Commercial NRT

2 Frassetto Way, Lincoln Park, NJ
A 9,443± sq ft industrial unit leased to IMC. Inc.

For information please call:

1 201 -587-9797
x 312 for Lloyd Tulp, or ltulp@tulfra.com
x 303 for Sal Frassetto, or sfrassetto@tulfra.com

Sales 2011



Mark Sanders
Lerman Sanders Realty

171 Long Avenue, Hillside, NJ
33,000± sq ft sold to Bath & Kitchen Distributors, Inc.



Alan Cafiero
Marcus & Millichap Real
Estate Investment Services

1901 East Linden Ave, Linden, NJ
36,000± sq ft sold to an Investment Group



Ben Sgambati
Marcus & Millichap Real
Estate Investment Services

1901 East Linden Ave, Linden, NJ
36,000± sq ft sold to an Investment Group



Angela Swan
Cupo Realty

340 13th Street, Carlstadt, NJ
A 15,480± sq ft sold to CV2, LLC

For information please call:

1 201 -587-9797
x 312 for Lloyd Tulp, or ltulp@tulfra.com
x 303 for Sal Frassetto, or sfrassetto@tulfra.com

Leases 2011



Richard Bonnano
Re/Max

53-55 Dwight Place, Fairfield, NJ

A 12,700± sq ft industrial unit leased to Titan Outdoor LLC



Peter Kim
Realty 7

300 McGaw Drive, Edison, NJ

A 8,200± sq ft industrial unit leased to MEK Central Jersey, Inc.



Rob Adams
Cushman & Wakefield

2 Frassetto Way, Lincoln Park, NJ

A 6,357± sq ft industrial unit leased to ABOX Automation



Tim Cadigan
CB Richard Ellis

4-6 Just Rd, Fairfield, NJ

A 8,000± sq ft industrial unit was leased

21 Fadem Road, Springfield, NJ

A 8,327± sq ft industrial unit (unit 2) leased to Digital Color Concepts, Inc.

For information please call:

1 201 -587-9797

x 312 for Lloyd Tulp, or ltulp@tulfra.com

x 303 for Sal Frassetto, or sfrassetto@tulfra.com

Leases 2011



Joseph Soos
Preferred Industrial
Properties of Middlesex
County

21 Fadem Road, Springfield, NJ

A 25,000± sq ft industrial unit (unit 7) leased to Gehrlicher Solar America Corp



Jason Crimmins
The Blau & Berg
Company

21 Fadem Road, Springfield, NJ

A 25,000± sq ft industrial unit (unit 7) leased to Gehrlicher Solar America Corp

A 5,985± sq ft industrial unit (unit 11) leased to Garda US

A 8,327± sq ft industrial unit (unit 2) leased to Digital Color Concepts, Inc.



Alex Conte
The Blau & Berg
Company

21 Fadem Road, Springfield, NJ

A 25,000± sq ft industrial unit (unit 7) leased to Gehrlicher Solar America Corp

A 5,985± sq ft industrial unit (unit 11) leased to Garda US

A 8,327± sq ft industrial unit (unit 2) leased to Digital Color Concepts, Inc.



Peter Murano
The Blau & Berg
Company

21 Fadem Road, Springfield, NJ

A 25,000± sq ft industrial unit (unit 7) leased to Gehrlicher Solar America Corp

A 5,985± sq ft industrial unit (unit 11) leased to Garda US

A 8,327± sq ft industrial unit (unit 2) leased to Digital Color Concepts, Inc.

For information please call:

1 201 -587-9797

x 312 for Lloyd Tulp, or ltulp@tulfra.com

x 303 for Sal Frassetto, or sfrassetto@tulfra.com

Leases 2011



Mitch Roman
American Properties

222 New Road, Parsippany, NJ

A 40,000± sq ft industrial unit leased to Catbridge Machinery, L.L.C.

53-55 Dwight Place, Fairfield, NJ

A 12,700± sq ft industrial unit leased to Titan Outdoor, LLC

35-51 Kulick Road, Fairfield, NJ

A 9,268± sq ft industrial unit (unit 2) leased to Nextron



Gene Baldecchi
Lerman Sanders Realty

168 Clifton Blvd, Clifton, NJ

A 6,800± sq ft industrial unit leased to Silk City Snacks, LLC

700 Rte 46 West, Clifton, NJ

A 13,097± sq ft industrial unit (unit 3) leased to Breakers and Controls Inc.



Scott Kraft
Allied Realty

204 Passaic Avenue, Fairfield, NJ

A 4,700± sq ft industrial unit leased to Trim and Tassels LLC

3 Borinski Drive, Lincoln Park, NJ

A 11,700± sq ft industrial unit leased to Jasper Engines & Transmissions



Donald Kornbluth
Greiner-Maltz of NJ

22 Riverview Drive, Wayne, NJ

A 6,500± sq ft industrial unit (unit 3) leased to Habonim Industrial Valves & Actuators - North America, Inc.

For information please call:

1 201 -587-9797

x 312 for Lloyd Tulp, or ltulp@tulfra.com

x 303 for Sal Frassetto, or sfrassetto@tulfra.com

Leases 2011



Jeff Fulton
Team Resources SBWE

385 Franklin Ave, Rockaway

A 38,200± sq ft industrial unit leased to Nutra-Med

22 Riverview Drive, Wayne

A 4,300± sq ft industrial unit leased to Designer Luggage Outlet, LLC



Ed Shein
Team Resources SBWE

385 Franklin Ave, Rockaway

A 38,200± sq ft industrial unit leased to Nutra-Med



Jeffrey Goldfinger
Bussel Realty

3775 Park Ave, Edison

A 23,337± sq ft industrial unit (unit 1) leased to DK Grocery

A 22,840± sq ft industrial unit (unit 2) leased to Anmol Distributors LLC



Barry Cohorsky
NAI James E. Hanson

21 Fadem Drive, Springfield

A 7,220± sq ft industrial unit (unit 12) leased to Global Shipping

For information please call:

1 201 -587-9797

x 312 for Lloyd Tulp, or ltulp@tulfra.com

x 303 for Sal Frassetto, or sfrassetto@tulfra.com

Leases 2011



Karen Marston
Weichert Realtors

22 Riverview Drive, Wayne, NJ

A 4,453± sq ft industrial unit leased to Brian's T.E.A.M., LLC



Darren Lizzack
NAI James E. Hanson,
Inc.

52 East Centre St, Nutley NJ

A 2,855± sq ft industrial unit leased to D & J Unlimited, Inc.



Louis Tapia
NAI James E. Hanson,
Inc.

1050 Valley Brook Avenue, Lyndhurst, NJ

A 17,790± sq ft industrial unit leased to Marchioro USA



Todd Hali
Resources Realty of
Northern New Jersey

3775 Park Avenue, Edison, NJ

A 11,372± sq ft industrial unit leased to International
Badminton Center

For information please call:

1 201 -587-9797

x 312 for Lloyd Tulp, or ltulp@tulfra.com

x 303 for Sal Frassetto, or sfrassetto@tulfra.com

Leases 2011



Roger Cantor
Cornerstone Real
Estate Group, LLC

168 Clifton Blvd, Clifton, NJ

A 14,400± sq ft industrial unit (unit 2) leased to Frimpeks Inc.



Ron Kraft
Allied Realty Associates,
LLC

22 Riverview Drive, Wayne, NJ

A 6,607± sq ft industrial unit leased to Plexaire, LLC

36-52 Kulick Rd, Fairfield, NJ

A 20,800± sq ft industrial unit leased to LaCour, Inc.



Richard Sidlovsky
Garden State Realty

300 McGaw Drive, Edison, NJ

A 8,200± sq ft industrial unit leased to MEK Central Jersey, Inc.

2 Frassetto Way, Lincoln Park, , NJ

A 6,357± sq ft industrial unit leased to ABOX Automation

1901 East Linden Ave, Linden, NJ

A 4,320± sq ft industrial unit (units 11,12, & 14) leased to
Cheese Experts USA

53-55 Dwight Place, Fairfield, NJ

A 12,700± sq ft industrial unit leased to Titan Outdoor LLC

385 Franklin Ave, Rockaway, NJ

A 12,700± sq ft industrial unit leased to Titan Outdoor LLC

21-25 Riverside Drive, Pine Brook, NJ

A 8,900± sq ft industrial unit leased to TS Van Lines, Inc.

For information please call:

1 201 -587-9797

x 312 for Lloyd Tulp, or ltulp@tulfra.com

x 303 for Sal Frassetto, or sfrassetto@tulfra.com

Leases 2011



Gregg Nowell
Sitar Company ONCOR
International

300 McGaw Drive, Edison, NJ
A 19,800± sq ft industrial unit leased to Transaction
Publishers, Inc.



Chris Santoro
Sitar Company ONCOR
International

300 McGaw Drive, Edison, NJ
A 19,800± sq ft industrial unit leased to Transaction
Publishers, Inc.



Christopher Galiano
NAI DiLeo-Bram & Co.

300 McGaw Drive, Edison, NJ
A 19,800± sq ft industrial unit leased to Transaction
Publishers, Inc.



Nate Leonard
NAI DiLeo-Bram & Co.

300 McGaw Drive, Edison, NJ
A 19,800± sq ft industrial unit leased to Transaction
Publishers, Inc.

For information please call:

1 201 -587-9797
x 312 for Lloyd Tulp, or ltulp@tulfra.com
x 303 for Sal Frassetto, or sfrassetto@tulfra.com

Leases 2011



Jeanne Rothenberg
Grubb & Ellis

4-6 Just Road, Fairfield, NJ

A 10,141± sq ft industrial unit leased to Ultimate Trading Corp.



Lew Solomon
Lee & Associates

35-51 Kulick Road, Fairfield, NJ

A 15,449± sq ft industrial unit leased to Spark Innovations Corp.



Pete Caraballo
Lerman Sanders Realty

36-52 Kulick Road, Fairfield, NJ

A 23,000± sq ft industrial unit leased to Industrial Labeling Systems, Inc.



Jason Levy
Team Resources SBWE

15-01 Pollitt Drive, Fair Lawn, NJ

A 7,522± sq ft industrial unit (unit 6) leased to Amco LLC

For information please call:

1 201 -587-9797

x 312 for Lloyd Tulp, or ltulp@tulfra.com

x 303 for Sal Frassetto, or sfrassetto@tulfra.com

Leases 2011



Greg Sabato
Resource Realty of
Northern NJ

3 Borinski Drive, Lincoln Park, NJ
A 8,980± sq ft industrial unit leased to Advanced Brewing Systems.



Jeff Heller
CB Richard Ellis

21 Fadem Road, Springfield, NJ
A 8,327± sq ft industrial unit (unit 2) leased to Digital Color Concepts, Inc.



Linda Hill
Jones Lang LaSalle

300 McGaw Drive, Edison, NJ
A 16,490± sq ft industrial unit leased to DSO Fluid Handling Co. Inc.

For information please call:

1 201 -587-9797
x 312 for Lloyd Tulp, or ltulp@tulfra.com
x 303 for Sal Frassetto, or sfrassetto@tulfra.com

Acquisitions 2011



Brian L. Cass
Jones Lang La Salle
Americas, Inc.

755 Central Ave, New Providence, NJ
A 62,500± sq ft building, closed

For information please call:

1 201 -587-9797
x 312 for Lloyd Tulp, or ltulp@tulfra.com
x 303 for Sal Frassetto, or sfrassetto@tulfra.com

Leases 2010



Howard Weinberg
Colliers & Houston & Co.

36-52 Kulick Road, Fairfield, NJ

A 21,000± sq ft industrial unit leased to Luce, Schwab & Kase, Inc.



Christopher Galiano
NAI DiLeo-Bram & Co.

300 McGaw Drive, Edison, NJ

A 45,354± sq ft industrial unit leased to Due Process Stable Trading Company, LLC



Robert Shuster
Lee & Associates

10 Clifton Blvd, Clifton, NJ

A 14,865± sq ft industrial unit (unit 4A) leased to Precise Components & Tool Design, Inc.



Frank Wolfer
Wolfer Commercial

15-01 Pollitt Drive, Fair Lawn NJ

A 7,522± sq ft industrial unit (unit 6) leased to Sovereign Fashion, LLC

For information please call:

1 201 -587-9797

x 312 for Lloyd Tulp, or ltulp@tulfra.com

x 303 for Sal Frassetto, or sfrassetto@tulfra.com

Leases 2010



David Fisher
Weichert Commercial

21 Fadem Road, Springfield, NJ

A 10,626± sq ft industrial unit (units 9 & 10) leased to Dav El Mass, Inc.

A 4,000± sq ft industrial unit (unit 8) leased to Axia Acquisition Corporation



David Williams
Weichert Commercial

21 Fadem Road, Springfield, NJ

A 10,626± sq ft industrial unit (units 9 & 10) leased to Dav El Mass, Inc.

A 4,000± sq ft industrial unit (unit 8) leased to Axia Acquisition Corporation



Jordan Metz
Bussel Realty

21 Fadem Road, Springfield, NJ

A 10,626± sq ft industrial unit (units 9 & 10) leased to Dav El Mass, Inc.

1901 East Linden Avenue, Linden NJ

A 1,440± sq ft industrial unit (unit 22) leased to Europa Parts LLC

A 2,880± sq ft industrial unit (units 17 & 18) leased to Grafx



Gene Baldecchi
Lerman Sanders Realty

200 Clifton Blvd, Clifton NJ

An 9,409± sq ft industrial unit (unit 3) leased to Silk City Snacks, L.L.C.

For information please call:

1 201 -587-9797

x 312 for Lloyd Tulp, or ltulp@tulfra.com

x 303 for Sal Frassetto, or sfrassetto@tulfra.com

Leases 2010



Richard Sidlovsky
Garden State Realty

1901 East Linden Avenue, Linden, NJ

A 1,440± sq ft industrial unit (unit 1) leased to Twistar Company, Inc.

A 4,320± sq ft industrial unit (units 11, 12, 14) leased to Cheese Experts USA

385 Franklin Avenue, Rockaway, NJ

A 4,800± sq ft industrial unit (unit 8) leased to Leathertan, LLC



John Donnelly
Grubb & Ellis

30 Sherwood Lane, Fairfield

A 14,383± sq ft industrial unit (unit 6) leased to CAG Industries



Rick Heilmann
The Arlington Group

3 Borinski Drive, Lincoln Park, NJ

A 10,600± sq ft industrial unit leased to Peak HVAC of NJ



Douglas Rowe
Colliers International NJ
LLC

4-6 Just Road, Fairfield, NJ

A 12,185± sq ft industrial unit leased to Nomadic Structures, Inc.

For information please call:

1 201 -587-9797

x 312 for Lloyd Tulp, or ltulp@tulfra.com

x 303 for Sal Frassetto, or sfrassetto@tulfra.com

Leases 2010



Leslie Meril
Colliers International NJ
LLC

4-6 Just Road, Fairfield, NJ

A 12,185± sq ft industrial unit leased to Nomadic Structures, Inc.



Linda Hill
Jones Lang La Salle
Brokerage, Inc.

1050 Valley Brook Ave, Lyndhurst, NJ

A 17,026± sq ft industrial unit (2A) leased to Frank's Export Truck Center LLC



Thomas A. Vetter
NAI James E. Hanson

17-09 Zink Place, Fair Lawn, NJ

An 18,900± sq ft industrial unit (4) leased to Premier Motor Lines, Inc. LLC



Jeffrey W. DeMagistris
NAI James E. Hanson

17-09 Zink Place, Fair Lawn, NJ

An 18,900± sq ft industrial unit (4) leased to Premier Motor Lines, Inc. LLC

For information please call:

1 201 -587-9797

x 312 for Lloyd Tulp, or ltulp@tulfra.com

x 303 for Sal Frassetto, or sfrassetto@tulfra.com

Leases 2010



Matthew Corpuel
CB Richard Ellis

17-09 Zink Place, Fair Lawn, NJ

An 18,900± sq ft industrial unit (4) leased to Premier Motor Lines, Inc. LLC

2 Frassetto Way, Lincoln Park, NJ

A 14,328± sq ft industrial unit (units 3 & 4) leased to Alliance Communications Inc.



Barry Cohorsky
NAI James E. Hanson

21 Fadem Road, Springfield, NJ

An 15,189± sq ft industrial unit (14) leased to Global Shipping Service, LLC



Ronald Kraft
Allied Realty

36-52 Kulick Rd, Fairfield, NJ

An 20,710± sq ft industrial unit leased to LaCour, Inc.



Joseph Boniakowski
E.A. Boniakowski Realty

1501-1525 West Blancke St. Linden, NJ

An 8,050± sq ft industrial unit leased to Reggie's Coffee

For information please call:

1 201 -587-9797

x 312 for Lloyd Tulp, or ltulp@tulfra.com

x 303 for Sal Frassetto, or sfrassetto@tulfra.com

Leases 2010



W. Joshua Levering
NAI James E. Hanson

3 Borinski Drive, Lincoln Park, NJ
A 5,200± sq ft industrial unit leased



Louis Tapia
NAI James E. Hanson

1050 Valley Brook Avenue, Lyndhurst, NJ
A 17,790± sq ft industrial unit leased to Marchioro USA



Brian Wilson
Resource Realty of
Northern NJ

385 Franklin Ave, Rockaway, NJ
A 4,800± sq ft industrial unit (unit 8) leased to Leathertan, LLC



Tom Alter
T.R. Alter & Associates,
Inc.

99 Commerce Road, Cedar Grove, NJ
A 47,500± sq ft industrial bldg leased to EMCO Industrial
Plastics, Inc.

For information please call:

1 201 -587-9797

x 312 for Lloyd Tulp, or ltulp@tulfra.com

x 303 for Sal Frassetto, or sfrassetto@tulfra.com

Leases 2010



Chuck Fern
Jones Lang LaSalle, Inc. **3775 Park Avenue, Edison, NJ**
A 90,000± sq ft industrial unit (units 1, 4, 17) leased to
Reliance Vitamin Company



Jason Barton
Jones Lang LaSalle, Inc. **3775 Park Avenue, Edison, NJ**
A 90,000± sq ft industrial unit (units 1, 4, 17) leased to
Reliance Vitamin Company



Steven Beyda
Jones Lang LaSalle, Inc. **3775 Park Avenue, Edison, NJ**
A 90,000± sq ft industrial unit (units 1, 4, 17) leased to
Reliance Vitamin Company



Jim Correll
American Properties **35 Righter Road, Randolph, NJ**
A 35,000± sq ft industrial unit (units 1, & 2) leased to
Anty Trucking

For information please call:

1 201 -587-9797
x 312 for Lloyd Tulp, or ltulp@tulfra.com
x 303 for Sal Frassetto, or sfrassetto@tulfra.com

Leases 2010



Steve Sander
CB Richard Ellis

2 Frassetto Way, Lincoln Park, NJ

A 14,328± sq ft industrial unit (units 3 & 4) leased to Alliance Communications Inc.



Rob Adams
Cushman & Wakefield

2 Frassetto Way, Lincoln Park, NJ

A 14,328± sq ft industrial unit (units 3 & 4) leased to Alliance Communications Inc.

For information please call:

1 201 -587-9797

x 312 for Lloyd Tulp, or ltulp@tulfra.com

x 303 for Sal Frassetto, or sfrassetto@tulfra.com

Sales 2009



Anthony Cassano
NAI James E. Hansen

15-01 Pollitt Drive, Fair Lawn, NJ
A 6,110± sq ft industrial unit (unit 7) sold to MLM Real Estate, LLC.



Douglas Rowe
GVA Williams

15-01 Pollitt Drive, Fair Lawn, NJ
A 11,623± sq ft industrial unit (unit 2) sold to Chitta, LLC



Leslie Meril
GVA Williams

15-01 Pollitt Drive, Fair Lawn, NJ
A 11,623± sq ft industrial unit (unit 2) sold to Chitta, LLC

For information please call:

1 201 -587-9797
x 312 for Lloyd Tulp, or ltulp@tulfra.com
x 303 for Sal Frassetto, or sfrassetto@tulfra.com

Leases 2009



Eric Lewin
SBWE, Inc.

21-25 Riverside Drive, Montville, NJ

A 13,700± sq ft industrial unit (unit 2) leased to Teawolf, LLC

17-09 Zink Place, Fair Lawn, NJ

A 20,316± sq ft industrial unit (units 6 & 7) leased to Zumbel Lighting Inc.



Richard Sidlovsky
Garden State Realty

17-09 Zink Place, Fair Lawn, NJ

A 40,914± sq ft industrial unit (units 4, 6 & 7) leased to Lotus Clean Energy, LLC

22 Riverview Drive, Wayne, NJ

A 19,545± sq ft industrial unit (units 2 & 3B) leased to Woods Restoration Services, LLC

21-25 Riverside Drive, Montville, NJ

An 8,900± sq ft industrial unit leased to TS Van Lines, Inc.

204 Passaic Avenue, Fairfield, NJ

A 12,535± sq ft industrial unit leased to BT Enterprises, LLC

1901 East Linden Avenue, Linden, NJ

A 1,440± sq ft industrial unit leased to Twistar Company, Inc.

705 Central Avenue, New Providence, NJ

A 15,685± sq ft industrial unit (unit 2) leased to Indigo Gymnastics Center, LLC

3775 Park Avenue, Edison, NJ

A 139,942± sq ft industrial unit (units 1, 2, 3, 17) leased to Lotus Clean Energy LLC

10 Clifton Blvd, Clifton, NJ

A 10,081± sq ft industrial unit (unit B3) leased to Hill-Rom Company, Inc.

For information please call:

1 201 -587-9797

x 312 for Lloyd Tulp, or ltulp@tulfra.com

x 303 for Sal Frassetto, or sfrassetto@tulfra.com

Leases 2009



Edward 'Ed' Santos
Coldwell Banker
Commercial

1901 East Linden Avenue, Linden, NJ

A 2,880± sq ft industrial unit (units 5 & 6) leased to
Conventional Stone Services Corp



Jordan Metz
Busse Realty

1901 East Linden Avenue, Linden, NJ

A 1,440± sq ft industrial unit (unit 23) leased to J & V Cargo
Services, Inc.

A 1,440± sq ft industrial unit (unit 22) leased to Europa Parts,
LLC



Robert Shuster
Lee & Associates

10 Clifton Blvd, Clifton, NJ

A 10,081± sq ft industrial unit (unit B1) leased to Cardo
Medical

222 New Road, Parsippany, NJ

A 20,702 ± sq ft industrial unit (unit 4) leased to Paraflex
Industries 2006, Inc.



Douglas Gaffney
The Shultz Organization

21-25 Riverside Drive, Montville, NJ

A 16,650± sq ft industrial unit leased to Manhattan
Physicians Laboratories I, Inc. dba Genatom

For information please call:

1 201 -587-9797

x 312 for Lloyd Tulp, or ltulp@tulfra.com

x 303 for Sal Frassetto, or sfrassetto@tulfra.com

Leases 2009



Frank Wolfer
Wolfer Commercial
Realty Corp.

3 Borinski Drive, Lincoln Park, NJ

A 5,600± sq ft industrial unit leased to Kanji Enterprises, LLC



Scott Perkins
NAI James E. Hanson

10 Clifton Blvd, Clifton, NJ

A 10,081± sq ft industrial unit (unit B3) leased to Hill-Rom
Company, Inc.



Gregg Kelman
GK Realty

2 Wood Avenue, Paterson, NJ

A 93,000± sq ft industrial bldg leased to Prestige Hospitality
Services, LLC

For information please call:

1 201 -587-9797

x 312 for Lloyd Tulp, or ltulp@tulfra.com

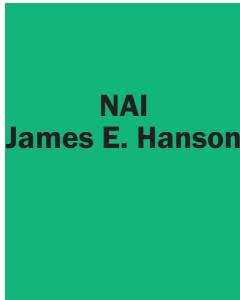
x 303 for Sal Frassetto, or sfrassetto@tulfra.com

Acquisitions 2008



Robert Rubin
NAI James E. Hanson

19-01 East Linden Ave, Linden, NJ
A 36,000± sq ft building, closed



Thomas W. Ryan
Sr. Vp. NAI James E.
Hanson

705 Central Ave, New Providence, NJ
A 51,000± sq ft building, closed



Thomas C. Nuara
Resource Realty of NJ,
Inc.

21 Fadem Road, Springfield, NJ
A 121,000± sq ft building, closed

For information please call:

1 201 -587-9797
x 312 for Lloyd Tulp, or ltulp@tulfra.com
x 303 for Sal Frassetto, or sfrassetto@tulfra.com

Sales 2008



Frank Wolfer
Wolfer Commercial

1 Entin Rd, Clifton, NJ

A 4,214 ± sq ft industrial unit (unit 3), Sold to Abraham Danan
700 Route 46 West, Clifton, NJ

A 2,749 ± sq ft industrial unit (unit 2), Sold to Advanced
Fiberworks



Gregg Kellman
GK Realty

17-09 Zink Place, Fair Lawn, NJ

A 31,098 ± sq ft industrial unit (unit 3), Sold to A. Zerega and
Sons



William Hassan
CB Richard Ellis

140 Porter Street, Hackensack, NJ

A 5,500± sq ft industrial bldg, Sold to Suan Farma, Inc.



Greg Hoffmann
McBride Corporate

15-01 Pollitt Drive, Fair Lawn, NJ

A 13,498± sq ft industrial unit (unit 10), Sold to Richard Des-
sau

For information please call:

1 201 -587-9797

x 312 for Lloyd Tulp, or ltulp@tulfra.com

x 303 for Sal Frassetto, or sfrassetto@tulfra.com

Sales 2008



Jim Kloster
McBride Corporate

15-01 Pollitt Drive, Fair Lawn, NJ

A 13,498± sq ft industrial unit (unit 10), Sold to Richard Dessau



Jimmy Frank
Cushman & Wakefield

3775 Park Ave, Edison, NJ

A 138,000± sq ft industrial unit (units 12,13,14), Sold to Atlantic Beverage Company



Sheila Sachs
Team Resources

15-01 Pollitt Drive, Fair Lawn NJ

A 5,383± sq ft industrial unit (unit 8b), Sold to Dr. Paul Drucker, Dr. Marshall Garland and Brian Warshaw



Andrew Schiffer
Cushman & Wakefield

15-01 Pollitt Drive, Fair Lawn NJ

A 7,209± sq ft industrial unit (unit 5), Sold to Tropical Brands, LLC

For information please call:

1 201 -587-9797

x 312 for Lloyd Tulp, or ltulp@tulfra.com

x 303 for Sal Frassetto, or sfrassetto@tulfra.com

Leases 2008



Steve Sander
CB Richard Ellis

30 Sherwood Lane, Fairfield, NJ

A 14,384 ± sq ft industrial unit (unit 6), Leased to Sourcing Home Products, LLC



Mitch Roman
American Properties

30 Sherwood Lane, Fairfield, NJ

A 14,384 ± sq ft industrial unit (unit 6), Leased to Sourcing Home Products, LLC

208 Passaic Avenue, Fairfield, NJ

A 26,150± sq ft industrial unit (unit 3a), Leased to Hotel at Home Inc.



Chris Hile
Jones Lang LaSalle

21-25 Riverside Drive, Montville, NJ

A 71,641± sq ft industrial unit (unit 6), Leased to The Westye Group East, LLC



Arthur Baris
Coldwell Banker
Commercial

15-01 Pollitt Drive, Fairfield, NJ

A 7,682± sq ft industrial unit (unit 9), Leased to Timbar Packaging

For information please call:

1 201 -587-9797

x 312 for Lloyd Tulp, or ltulp@tulfra.com

x 303 for Sal Frassetto, or sfrassetto@tulfra.com

Leases 2008



Frank Wolfer
Wolfer Commercial

1 Entin Road, Clifton, NJ

A 3,100 ± sq ft industrial unit (unit 7b), Leased to East Coast Trader



Scott Kraft
Allied Realty

3 Borinski Drive, Lincoln Park, NJ

An 11,700 ± sq ft industrial unit, Leased to Jasper Engines & Transmissions



Jordan Metz
Bussel Realty

1501-1525 West Blancke Street, Linden, NJ

A 9,400 ± sq ft industrial unit, Leased to Atlanta World Supply, LLC

53-55 Dwight Place, Fairfield, NJ

A 11,500 ± sq ft industrial unit, Leased to Miretti USA, LLC



David Mosseri
Mosseri Realty

1501-1525 West Blancke Street, Linden, NJ

A 9,400 ± sq ft industrial unit, Leased to Atlanta World Supply, LLC

For information please call:

1 201 -587-9797

x 312 for Lloyd Tulp, or ltulp@tulfra.com

x 303 for Sal Frassetto, or sfrassetto@tulfra.com

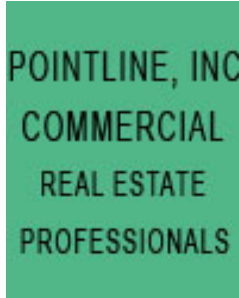
Leases 2008



Tom Palestina
Palestina Properties

52 East Centre Street, Nutley, NJ

A 2,855± sq ft industrial unit Leased to Nicholas Solazzo of Marimar Textiles, Inc.



Shirley Smith
PointLine, Inc.
Commercial

208 Passaic Street, Fairfield, NJ

A 70,000± sq ft industrial unit Leased to PSS World Medical



Richard Tull
McBride Corporate
Real Estate

21-25 Riverside Drive, Montville, NJ

A 32,966± sq ft industrial unit Leased to Signature Marketing Group



Daniel R. Saxon
Kurgan-Bergen
Realtors (formerly
McBride Real Estate)

200 Clifton Boulevard, Clifton, NJ

A 47,300± sq ft industrial unit Leased to W.H. Linen Supply Co., Inc.

For information please call:

1 201 -587-9797

x 312 for Lloyd Tulp, or ltulp@tulfra.com

x 303 for Sal Frassetto, or sfrassetto@tulfra.com

Leases 2008

GALESI
REALTY

George Pertesis
Galesi Realty

200 Clifton Blvd, Clifton, NJ

A 47,300± sq ft industrial unit Leased to W.H. Linen Supply Co.
Inc.



Larry Lerman
Lerman Sanders
Realty

3 Borinski Drive, Lincoln Park, NJ

A 15,800± sq ft industrial unit Leased to Smartparts, Inc.

For information please call:

1 201 -587-9797

x 312 for Lloyd Tulp, or ltulp@tulfra.com

x 303 for Sal Frassetto, or sfrassetto@tulfra.com

Acquisitions 2007



Robert Shuster
Grubb & Ellis

15-01 Pollitt Drive, Fairlawn, NJ

A 121,000 ± sq ft building, closed.



Gregg Kelman
GK Realty

17-09 Zink Place, Fairlawn, NJ

A 134,000 ± sq ft building, closed.



David Kanegis
Kanegis & Co.

3775 Park Avenue, Edison NJ

A 507,000 ± sq ft building, closed.



Jimmy Frank
Cushman & Wakefield

3775 Park Avenue, Edison NJ

A 507,000 ± sq ft building, closed.

For information please call:

1 201 -587-9797

x 312 for Lloyd Tulp, or ltulp@tulfra.com

x 303 for Sal Frassetto, or sfrassetto@tulfra.com

Sales 2007



Jason Levy
Team Resources Inc.

700 Route 46, Clifton, NJ

A 16,582 ± sq ft industrial unit (unit 6 & unit 7), Sold to Kobra/JCF.



Phil Kreizer
Philip J. Kreizer &
Associates, Inc.

30 Sherwood Lane, Fairfield, NJ

A 3,386 ± sq ft industrial unit sold to Specialized Storage Systems.



Rich Sidlovsky
Garden State Realty

30 Sherwood Lane, Fairfield, NJ

A 7,403 ± sq ft industrial unit , Sold to V & L
A 8,879 ± sq ft industrial unit , Sold to SSG Enterprises

700 Route 46, Clifton, NJ

A 4,000 ± sq ft industrial unit , Sold to Cuda.
A 5,450 ± sq ft industrial unit , Sold to UDI Precision



Ed Seidler
Coldwell Banker

160 Gregg Street, Lodi, NJ

A 5,250 ± sq ft industrial unit , Sold to Metro Limo

For information please call:

1 201 -587-9797

x 312 for Lloyd Tulp, or ltulp@tulfra.com

x 303 for Sal Frassetto, or sfrassetto@tulfra.com

Sales 2007



Mildred Hanson
NAI James E. Hanson
Inc.

1 Entin Road, Clifton, NJ

A 17,000 ± sq ft industrial unit (unit 2), Sold to Shadowstone, Inc.



Steve Sander
Weichert Commercial
Brokerage, Inc.

1 Entin Road, Clifton, NJ

A 25,000 ± sq ft industrial unit (unit 1), Sold to The Metropolitan Baking Company

**Weichert
Commercial
Brokerage, Inc.**

Peter Scrivo
Weichert Commercial
Brokerage, Inc.

1 Entin Road, Clifton, NJ

A 25,000 ± sq ft industrial unit (unit 1), Sold to The Metropolitan Baking Company



John Aires
NAI James E. Hanson
Inc.

700 Route 46, Clifton, NJ

A 9,000 ± sq ft industrial unit (unit 4), Sold to Vincent Huang.

For information please call:

1 201 -587-9797

x 312 for Lloyd Tulp, or ltulp@tulfra.com

x 303 for Sal Frassetto, or sfrassetto@tulfra.com

Sales 2007



Patrick Conte
Barry Associates

700 Route 46, Clifton, NJ

A 16,000 ± sq ft industrial unit (unit 5), Sold to DJR KAM, LLC.



Roger Cantor
Cornerstone Real
Estate Group

1 Entin Road, Clifton, NJ

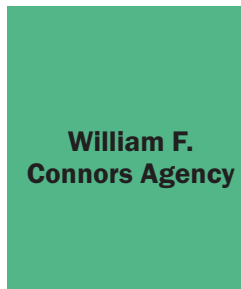
A 7,118 ± sq ft industrial unit (unit 6), Sold to R.A.G.



Frank Wolfer
SBWE Inc.

700 Route 46, Clifton, NJ

A 13,097 ± sq ft industrial unit (unit 3), Sold to Bersan International, Inc.



William Connors
William F. Connors
Agency

1 Entin Rd, Clifton, NJ

A 5,219 ± sq ft industrial unit (unit 5), Sold to Best Environmental Control Corp.

For information please call:

1 201 -587-9797

x 312 for Lloyd Tulp, or ltulp@tulfra.com

x 303 for Sal Frassetto, or sfrassetto@tulfra.com

Leases 2007



Ted Merge
Hannelly-Merge Co.

10 Malcolm Ave, Teterboro, NJ

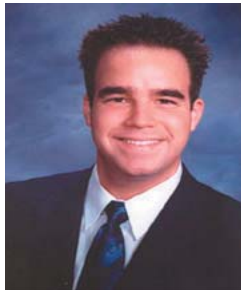
A 10,500 ± sq ft industrial unit Leased to Interline Brands, Inc.



Gregg Nowell
Sitar Company ONCOR
International

300 McGaw Drive, Edison, NJ

A 36,856 ± sq ft industrial unit Leased to Transaction
Publishers, Inc



Christopher Santoro
Sitar Company ONCOR
International

300 McGaw Drive, Edison, NJ

A 36,856 ± sq ft industrial unit Leased to Transaction
Publishers, Inc.



James Correll
American Properties
Realty, Inc.

385 Franklin Ave, Rockaway, NJ

A 10,800 ± sq ft industrial unit Leased to Tri-State Stone &
Tile, Inc.

For information please call:

1 201 -587-9797

x 312 for Lloyd Tulp, or ltulp@tulfra.com

x 303 for Sal Frassetto, or sfrassetto@tulfra.com

Leases 2007



Mitch Roman
American Properties

222 New Road, Parsippany, NJ

A 40,209 ± sq ft industrial unit Leased to Catbridge Machinery.



David Knee
Lee & Klatskin Assoc

35-51 Kulick Road, Fairfield, NJ

A 11,100 ± sq ft industrial unit Leased to Comcast of New Jersey.



Chris Hile
Lee & Klatskin Assoc

35-51 Kulick Road, Fairfield, NJ

A 11,100 ± sq ft industrial unit Leased to Comcast of New Jersey.



Scott Maynard
Rubin Realty

385 Franklin Ave, Rockaway, NJ

A 5,400 ± sq ft industrial unit Leased to Autopart International

For information please call:

1 201 -587-9797

x 312 for Lloyd Tulp, or ltulp@tulfra.com

x 303 for Sal Frassetto, or sfrassetto@tulfra.com

Leases 2007



Rich Sidlovsky
Garden State Realty

385 Franklin Ave, Rockaway, NJ

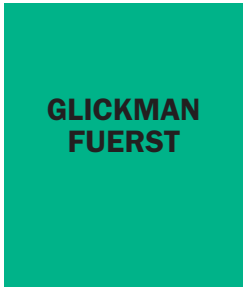
A 5,400 ± sq ft industrial unit Leased to Autopart International



Sean McHale
Equis Corporation

10 Clifton Blvd, Clifton, NJ

A 10,000 ± sq ft industrial unit Leased to Stanley Steemer International, Inc.



Alan Glickman
Glickman Fuerst

23 Kulick Road, Fairfield, NJ

A 7,500 ± sq ft industrial unit Leased to Lincare Inc.



Greg Sabato
American Properties

22 Riverview Drive, Wayne, NJ

A 2,635 ± sq ft industrial unit Leased to TechnoDyne, LLC.

For information please call:

1 201 -587-9797

x 312 for Lloyd Tulp, or ltulp@tulfra.com

x 303 for Sal Frassetto, or sfrassetto@tulfra.com

Leases 2007

**DILEO REALTY
ASSOCIATES**

Chris Galiano
DiLeo Realty
Associates

300 McGaw Drive, Edison, NJ

A 43,354 ± sq ft industrial unit Leased to Due process Stable
Trading Company, LLC



Geri O'Dell
Cushman & Wakefield
of New Jersey Inc.

17-09 Zink Place Fair Lawn, NJ

A 16,536 ± sq ft industrial unit Leased to Anything IT

For information please call:

1 201 -587-9797

x 312 for Lloyd Tulp, or ltulp@tulfra.com

x 303 for Sal Frassetto, or sfrassetto@tulfra.com

Acquisitions 2006



Sheila Sachs
Team Resources

700 Route 46 West, Clifton, NJ

A 74,000 ± sq ft building, closed.



Gregg Kelman
GK Realty

10 Malcolm Avenue, Teterboro, NJ

A 56,000 ± sq ft industrial building, closed.



William Waxman
CBRE

10 Malcolm Avenue, Teterboro, NJ

A 56,000 ± sq ft industrial building, closed.

For information please call:

1 201 -587-9797

x 312 for Lloyd Tulp, or ltulp@tulfra.com

x 303 for Sal Frassetto, or sfrassetto@tulfra.com

Acquisitions 2006



David Cantor
Team Resources

1 Entin Road, Clifton, NJ
A 68,000 ± sq ft industrial building, closed



Thomas Vetter
NAI James E. Hanson

1 Entin Road, Clifton, NJ
A 68,000 ± sq ft industrial building, closed



Jeffrey DeMagistris
NAI James E. Hanson

1 Entin Road, Clifton, NJ
A 68,000 ± sq ft industrial building, closed

For information please call:

1 201 -587-9797
x 312 for Lloyd Tulp, or ltulp@tulfra.com
x 303 for Sal Frassetto, or sfrassetto@tulfra.com

Sales 2006



Lissa Roy
Team Resources

52 East Centre Street, Nutley, NJ

A 3,150 ± sq ft industrial unit, Sold to Superior Investments.



Tony Ursillo
Ursillo Realty

650 Route 46 West, Clifton, NJ

A 4,200 ± sq ft building, plus 2 acres of land, Sold to English Paving.



Mille Hanson
NAI James E. Hanson

160 Gregg Street, Lodi, NJ

A 4,966 ± sq ft industrial unit, Sold to Dekyung Properties.



Scott Kraft
Allied Realty

30 Sherwood Lane, Fairfield, NJ

A 4,875 ± sq ft industrial unit, Sold to Chrome & Custom Cycles.

For information please call:

1 201 -587-9797

x 312 for Lloyd Tulp, or ltulp@tulfra.com

x 303 for Sal Frassetto, or sfrassetto@tulfra.com

Sales 2006



Jason Crimmins
Blau & Berg

30 Sherwood Lane, Fairfield, NJ
A 5,635 ± sq ft industrial unit, Sold to Ambrosia.



Austin Godfrey
Colliers, Houston & Co.

30 Sherwood Lane, Fairfield, NJ
A 6,052 ± sq ft industrial unit, Sold to JP Equipment.



Richard Sidlovsky
Garden State Realty

30 Sherwood Lane, Fairfield, NJ
An 8,400 ± sq ft industrial unit, Sold to Party King.



Robert Kiener
Garden State Realty

30 Sherwood Lane, Fairfield, NJ
A 3,117 ± sq ft industrial unit to Scout Electric,

For information please call:

1 201 -587-9797
x 312 for Lloyd Tulp, or ltulp@tulfra.com
x 303 for Sal Frassetto, or sfrassetto@tulfra.com

Sales 2006



Wayne Kranz
Coldwell Commercial
Feist & Feist

170 Gregg Street, Lodi, NJ

A 7,500± sq ft industrial unit, Sold to OC Basements.



Jason Levy
Team Resources

10 Malcolm Avenue, Teterboro, NJ

A 9,200± sq ft industrial unit, Sold to Food Ingredients.



Richard Sidlovsky
Garden State Realty

170 Gregg Street, Lodi, NJ

An 5,700 ± sq ft industrial unit, Sold to Audio Warehouse.



Scott Kraft
Allied Realty

30 Sherwood Lane, Fairfield, NJ

An 3,900 ± sq ft industrial unit, Sold to Manhattan Maintenance.

For information please call:

1 201 -587-9797

x 312 for Lloyd Tulp, or ltulp@tulfra.com

x 303 for Sal Frassetto, or sfrassetto@tulfra.com

Sales 2006



Richard Sidlovsky
Garden State Realty

170 Gregg Street, Lodi, NJ

An 4,830 ± sq ft industrial unit, Sold to In Vogue Fragrances.



Bart Natoli
ReMax

92 Route 46 East, Elmwood Park, NJ

A 30,000 ± sq ft industrial building, sold to Beck.



Mitch Helfman
MRH Real Estate
Services Inc.

170 Gregg Street, Lodi, NJ

A 16,750 ± sq ft industrial unit, sold to CDS.



Maria MacDonald
KMAC Commercial &
Industrial Real Estate

30 Sherwood Lane, Fairfield, NJ

A 3,897 ± sq ft industrial unit, sold to Kadir.

For information please call:

1 201 -587-9797

x 312 for Lloyd Tulp, or ltulp@tulfra.com

x 303 for Sal Frassetto, or sfrassetto@tulfra.com

Leases 2006



Peter Caraballo
Lerman Sanders Re-
alty

4-6 Just Road, Fairfield, NJ

A 12,500 ± sq ft industrial unit, Leased to Prime Ingredient Systems.



Scott Nelson
GVA Advantis

208 Passaic Avenue, Fairfield, NJ

A 61,000 ± sq ft industrial unit, Leased to PSS World Medical Inc.



Jim Correll
American Properties
Realty Inc.

285 Eldridge Road, Fairfield, NJ

A 21,760± sq ft industrial unit, Leased to Excalibur Equipment Inc.



Fred Brunswick
Cushman & Wakefield

285 Eldridge Road, Fairfield, NJ

A 21,760± sq ft industrial unit, Leased to Excalibur Equipment Inc.

For information please call:

1 201 -587-9797

x 312 for Lloyd Tulp, or ltulp@tulfra.com

x 303 for Sal Frassetto, or sfrassetto@tulfra.com

Leases 2006



Lissa Roy
Team Resources

22 Riverview Drive, Wayne, NJ
A 16,600 ± sq ft industrial unit, Leased to Display Craft.



Greg Sabato
American Properties
Realty

22 Riverview Drive, Wayne, NJ
A 2,635 ± sq ft industrial unit, Leased to TechnoDyne.



Andrew Siemsen
Cushman & Wakefield

35 Righter Road, Randolph, NJ
A 19,000 ± sq ft industrial unit, Leased to Masco, Inc.



Jon Marks
Cushman & Wakefield

4-6 Just Road, Fairfield, NJ
A 30,000 ± sq ft industrial unit, Leased to Comtec, Inc.

For information please call:

1 201 -587-9797
x 312 for Lloyd Tulp, or ltulp@tulfra.com
x 303 for Sal Frassetto, or sfrassetto@tulfra.com

Acquisitions 2005



Tom Consiglio
Resource Realty

130 West Forest Avenue, Englewood, NJ

A 48,000 ± sq ft industrial building, closed



Jeffrey Miller
SBWE

120 Brighton Road, Clifton, NJ

A 79,000 ± sq ft industrial building, closed



Joe Manganaro
Team Resources

1501-25 West Blancke Street, Linden, NJ

A 113,000 ± sq ft industrial building, closed



Sheila Sachs
Team Resources

1501-25 West Blancke Street, Linden, NJ

A 113,000 ± sq ft industrial building, closed

For information please call:

1 201 -587-9797

x 312 for Lloyd Tulp, or ltulp@tulfra.com

x 303 for Sal Frassetto, or sfrassetto@tulfra.com

Acquisitions 2005



David Ferber
SBWE

170 Gregg Street, Lodi, NJ
A 62,000 ± sq ft industrial building, closed



Frank Wolfer
SBWE

170 Gregg Street, Lodi, NJ
A 62,000 ± sq ft industrial building, closed



Sam Riela
Riela Realty

92 Route 46 East, Elmwood Park, NJ
A 30,000 ± sq ft industrial building, closed

For information please call:

1 201 -587-9797
x 312 for Lloyd Tulp, or ltulp@tulfra.com
x 303 for Sal Frassetto, or sfrassetto@tulfra.com

Sales 2005



Lissa Roy
Team Resources

52 East Centre Street, Nutley, NJ

A 4,500 ± sq ft industrial unit, Sold to Superior Fragrances



Bill Waxman
CBRE

120 Brighton Road, Clifton, NJ

A 23,000 ± sq ft industrial unit, Sold to Global Clothing Network



Steven Shaw
Coldwell Banker

52 East Centre Street, Nutley, NJ

A 8,111 ± sq ft industrial unit, Sold to Marco International



Darren Lizzack
NAI James E. Hanson

52 East Centre Street, Nutley, NJ

A 7,200 ± sq ft industrial unit, Sold to Block Scientific

For information please call:

1 201 -587-9797

x 312 for Lloyd Tulp, or ltulp@tulfra.com

x 303 for Sal Frassetto, or sfrassetto@tulfra.com

Sales 2005



Mike Kerrins
American Properties

120 Brighton Road, Clifton, NJ

A 4,000 ± sq ft industrial unit, Sold to Hunter Manufacturing



Mille Hanson
NAI James E. Hanson

160 Gregg Street, Lodi, NJ

A 4,966 ± sq ft industrial unit, Sold to Point Tech

A 5,250 ± sq ft industrial unit, Sold to Beautee Sense



Richard Sidlovsky
Garden State Realty

52 East Centre Street, Nutley, NJ

A 2,100 ± sq ft industrial unit

120 Brighton Road, Clifton, NJ

A 18,000 ± sq ft industrial unit, Sold to Fastenation

160 Gregg Street, Lodi, NJ

A 5,700 ± sq ft industrial unit, Sold to Classique Footwear

A 4,900 ± sq ft industrial unit, Sold to New Balance

A 5,100 ± sq ft industrial unit, Sold to Wire Displays, Inc

For information please call:

1 201 -587-9797

x 312 for Lloyd Tulp, or ltulp@tulfra.com

x 303 for Sal Frassetto, or sfrassetto@tulfra.com

Leases 2005



Irv Weiss
SBWE

10 Clifton Boulevard, Clifton, NJ

A 10,081 ± sq ft industrial unit, Leased to World Aluminum



David Silberberg
Space Works Realty

120 Brighton Road, Clifton, NJ

A 30,000 ± sq ft industrial unit, Leased to S.R.I.



Joseph Manganaro
Team Resources

1501-25 West Blancke Street, Linden, NJ

A 9,500 ± sq ft industrial unit, Leased to Logistics 88



Joseph Boniakowski
E.A. Boniakowski

1501-25 West Blancke Street, Linden, NJ

A 8,050 ± sq ft industrial unit, Leased to Reggies Coffee

For information please call:

1 201 -587-9797

x 312 for Lloyd Tulp, or ltulp@tulfra.com

x 303 for Sal Frassetto, or sfrassetto@tulfra.com

Leases 2005



Jordan Metz
Bussel Realty

1501-25 West Blancke Street, Linden, NJ
A 9,000 ± sq ft industrial unit, Leased to Top Tee Inc.



Sheila Sachs
Team Resources

1501-25 West Blancke Street, Linden, NJ
A 9,000 ± sq ft industrial unit, Leased to Top Tee Inc.
A 27,000 ± sq ft industrial unit, Leased to Williams and Wells Company



Chris Michael
T.R. Alter & Associates

385 Franklin Avenue, Rockaway, NJ
A 13,500 ± sq ft industrial unit, Leased to Nutra-Med



Hank Freeman
SBWE

160 Gregg Street, Lodi, NJ
A 5,250± sq ft industrial unit, Leased to Luna Limousine

For information please call:

1 201 -587-9797
x 312 for Lloyd Tulp, or ltulp@tulfra.com
x 303 for Sal Frassetto, or sfrassetto@tulfra.com

Leases 2005



Andy Schiffer
Cushman Wakefield

200 Clifton Boulevard, Clifton, NJ
A 20,000 ± sq ft industrial unit, Leased to Graphic Express



Bill Bonn
Evergreen Commercial

200 Clifton Boulevard, Clifton, NJ
A 4,000 ± sq ft industrial unit, Leased to Great American Closets



Mark Sanders
Lerman Sanders

200 Clifton Boulevard, Clifton, NJ
A 10,500 ± sq ft industrial unit, Leased to Metro Wireless Communications



Alan Glickman
Glickman Fuerst

204-208 Passaic, Fairfield, NJ
A 9,400 ± sq ft industrial unit, Leased to Advantage Consulting
23 Kulick Road, Fairfield, NJ
A 7,500 ± sq ft industrial unit, Leased to Lincare, Inc.

For information please call:

1 201 -587-9797
x 312 for Lloyd Tulp, or ltulp@tulfra.com
x 303 for Sal Frassetto, or sfrassetto@tulfra.com

Leases 2005

TENANT
ADVISERS
LLC

Michael Shalen
Tenant Advisers LLC

3 Borinski Road, Lincoln Park, NJ

A 3,700 ± sq ft industrial unit, Leased to Convenience Store Solutions



Ronald Kraft
Allied Realty

204-208 Passaic, Fairfield, NJ

A 12,535 ± sq ft industrial unit, Leased to simply the Best inflatables



John Illengwarth
Spectra Realty

22 Riverview Drive, Wayne, NJ

A 16,910 ± sq ft industrial unit, Leased to Vacumet



Peter Caraballo
Lerman Sanders

36-52 Kulick Road, Fairfield, NJ

A 12,500 ± sq ft industrial unit, Leased to Industrial Labeling

For information please call:

1 201 -587-9797

x 312 for Lloyd Tulp, or ltulp@tulfra.com

x 303 for Sal Frassetto, or sfrassetto@tulfra.com

